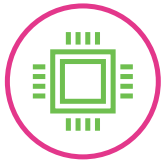


# ideapad CREATOR 5i (15")

## CREATE AMAZING.

Unleash your full creative potential with the Lenovo™ **IdeaPad™** Creator 5i, a performance machine fueled by uncompromising power and immaculate display clarity, while packing original features tailored for creativity applications. The 10<sup>th</sup> generation Intel® Core™ i7 mobile processors and NVIDIA® GeForce® GTX 1650 Ti graphics convert to give you unrestrained horsepower and a hassle-free computing experience. And included in Lenovo Vantage are a suite of applications designed for creators, supplying a range of support tools to power effortless creativity.

### WHY YOU SHOULD BUY THE LENOVO IDEAPAD CREATOR 5i (15")



#### A productivity powerhouse

Nothing here comes at the expense of performance. The 10<sup>th</sup> generation Intel® Core™ i7 mobile processors, latest NVIDIA® GeForce® GTX 1650 Ti graphics and Studio Drivers deliver ultra-fast performance for everyday tasks or content creation.



#### Cool, whisper-quiet performance

**IdeaPad** Creator 5i was engineered for a quieter and cooler user experience, even while running graphics-intensive software. Featuring a robust dual fan and vent system, enhanced heat sinks and more support for higher CPU and GPU temperatures, it also offers Q-Control, allowing users to adjust the fan speed from Quiet to Balance to Performance Mode for a truly customized thermal experience, whether you need to maximize battery life or dial up the performance for intense creative work.



Lenovo™



#### Color outside the lines

**IdeaPad** Creator 5i features a crystal-clear 15.6" WVA FHD display with 100% Adobe RGB to immerse you in a world of truly vivid color. Delta E<2 color calibration technologies help creators achieve faithful tonal accuracy, letting them color in their own universes with clear conviction.



#### Tailor-made for content creation

Lenovo Vantage now features a new UI design as well as a full suite of designer-favorite applications, including Adobe Creative Cloud apps.



[WWW.LENOVO.COM](http://WWW.LENOVO.COM)



# ideapad CREATOR 5i (15")

## SPECIFICATIONS

Lenovo IdeaPad Creator 5i (15", 5)\*

### PERFORMANCE

#### Processor

10<sup>th</sup> Generation Intel® Core™ i7-10750H  
10<sup>th</sup> Generation Intel® Core™ i5-10300H

#### Operating System

Windows 10 Home

#### Graphics

NVIDIA® GeForce® GTX 1650 Ti  
NVIDIA® GeForce® GTX 1650

#### Memory

2933 MHz DDR4 : 8 GB / 16 GB

#### Storage<sup>2</sup>

SSD : 256 GB / 512 GB  
HDD + SSD : 1 TB + 128 GB / 1 TB + 256 GB /  
1 TB + 512 GB

#### Battery<sup>3</sup>

Up to 9.6 Hours; Rapid Charge<sup>4</sup>

### DESIGN

#### Display

15.6" FHD (1920 x 1080) WVA,  
100% Adobe RGB, Delta E<2

#### Dimension (W x D x H)

(mm) : 359 x 249.6 x 24.9  
(inches) : 14.13" x 9.83" x 0.98"

#### Weight

Starting at 2.2 kg (4.8 lbs)

#### Keyboard

Backlit Keyboard (White)

#### Color

Dark Moss

#### Wow Features

15.6" FHD WVA 100% Adobe RGB Display,  
Delta E<2  
3-Side Narrow Bezel with 83% Active  
Area Ratio  
Flexibility with Memory & Storage Upgrade  
by yourselves (up to dual-slot memory &  
dual SSDs)  
Lenovo Q-Control with 3-mode for  
Work & Play  
TrueBlock Privacy Shutter

### CONNECTIVITY

#### Webcam

720p HD Webcam & Microphone  
Array with Privacy Shutter

#### WLAN

Intel® WiFi 6 (802.11 ax)  
Intel® WiFi 5 (802.11 ac)

#### Bluetooth®

Bluetooth® 5.0

#### Audio

2 x 1.5W Speakers with Dolby Audio™

#### Input/Output (I/O) Ports

2 x USB 3.1 Gen 1<sup>5</sup>  
1 x USB 3.1 Type-C™  
1 x HDMI™ 2.0  
1 x LAN  
1 x 3.5 mm Combo Audio Jack  
1 x Novo Hole

### PRELOADED SOFTWARE

- Lenovo Antivirus Plus<sup>6</sup>
- Lenovo PC Manager<sup>6</sup>
- Lenovo Utility<sup>7</sup>
- Lenovo Vantage<sup>8</sup>
- LinkedIn<sup>8</sup>
- McAfee LiveSafe™<sup>8</sup>
- Microsoft Office

<sup>1</sup> Tech ready.

<sup>2</sup> Combo storage options available.

<sup>3</sup> All battery life claims are approximate and based on results using the MobileMark® 2018 v1.0.2.46 battery life benchmark test. Actual battery life will vary and depends on many factors such as product configuration and usage, software use, wireless functionality, power management settings, and screen brightness. The maximum capacity of the battery will decrease with time and use.

<sup>4</sup> 1 hour 0-80%.

<sup>5</sup> The actual transfer speed of the USB 3.1 Gen 1 will vary and, depending on many factors, such as the processing capability of host and peripheral devices, file attributes and other factors related to system configuration and your operating environments, will be slower than a speed of 5 Gbit/s.

<sup>6</sup> PRC only.

<sup>7</sup> Worldwide (WW).

<sup>8</sup> ROW only.



## LENOVO SERVICES

#### Warranty Upgrades - On-site / In-Home Service

Maximizes PC uptime and productivity by providing convenient, fast repair services in your own home.

#### Accidental Damage Protection

Avoid the hassles of unexpected repair costs. Provides coverage for non-warranted damage incurred under normal operating conditions, such as minor spills, drops or damage to the integrated screen.

#### Warranty Extensions (1-to-3 Years Total Duration)

This fixed-term, fixed-cost service helps accurately budget for PC expenses, protect your valuable investment and potentially lower the cost of ownership over time.

\* Example of Lenovo IdeaPad Creator catalogue naming convention

IdeaPad	Creator	5	i	(15", 5)
Sub-brand	Form factor	Positioning	Intel® version	Size and generation

## OPTIONS & ACCESSORIES



Lenovo 400  
Wireless Mouse



Lenovo 15.6"  
Laptop Casual  
Backpack B210



Lenovo 100 In-Ear  
Headphone



WWW.LENOVO.COM

Lenovo reserves the right to alter product offerings and specifications at any time, without notice. Lenovo makes every effort to ensure accuracy of all information but is not liable or responsible for any editorial, photographic or typographic errors. All images are for illustration purposes only. For full Lenovo product, service and warranty specifications visit [www.lenovo.com](http://www.lenovo.com). Lenovo makes no representations or warranties regarding third party products or services. **Trademarks:** The following are trademarks or registered trademarks of Lenovo: Lenovo, the Lenovo logo, ideapad, IdeaCentre, yoga and yoga logo. Microsoft, Windows and Vista are registered trademarks of Microsoft Corporation. Ultrabook, Celeron, Celeron Inside, Core Inside, Intel, Intel Logo, Intel Atom, Intel Atom Inside, Intel Core, Intel Core Inside, Intel Inside Logo, Intel vPro, Itanium, Itanium Inside, Pentium, Pentium Inside, vPro Inside, Xeon, Xeon Phi, and Xeon Inside are trademarks of Intel Corporation in the U.S. and/or other countries. Other company, product and service names may be trademarks or service marks of others. Visit [www.lenovo.com/lenovo/us/en/safecomp/](http://www.lenovo.com/lenovo/us/en/safecomp/) periodically for the latest information on safe and effective computing. ©2020 Lenovo. All rights reserved.



Lenovo™