



D Montageanleitung

F Notice de montage

NL Handleiding voor de montage

CZ Monzázní návod

HU Szereelési útmutató

TR Montaj talimatı

GB Assembly instructions

I Istruzione di montaggio

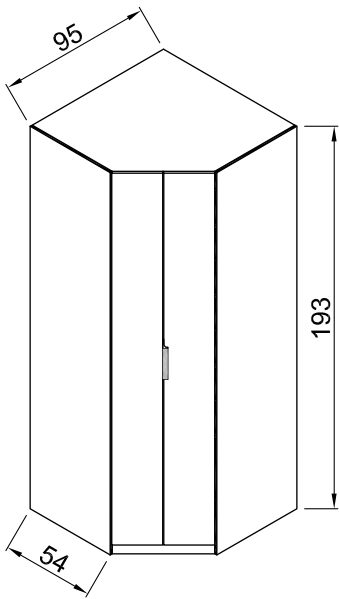
PL Instrukcja montaży

SK Návod na montáž

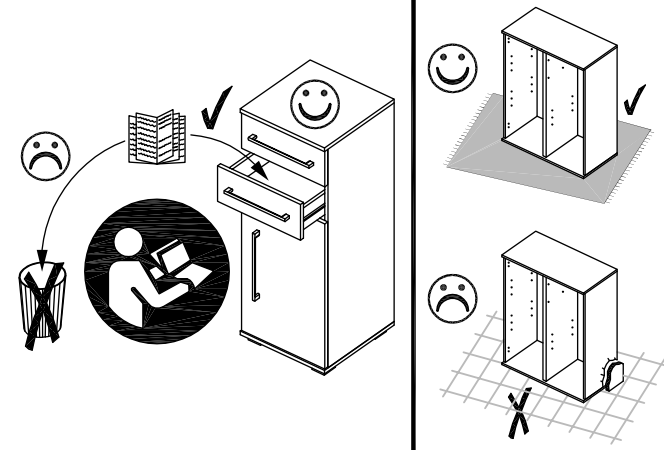
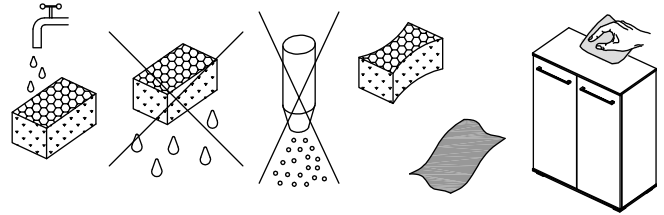
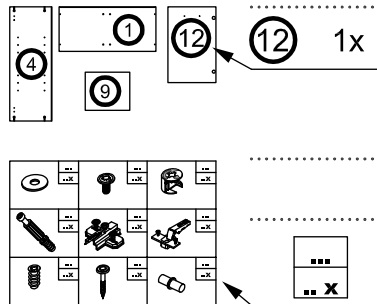
RO Instrucțiuni de montaj

RU ИНСТРУКЦИЯ ПО МОНТАЖУ

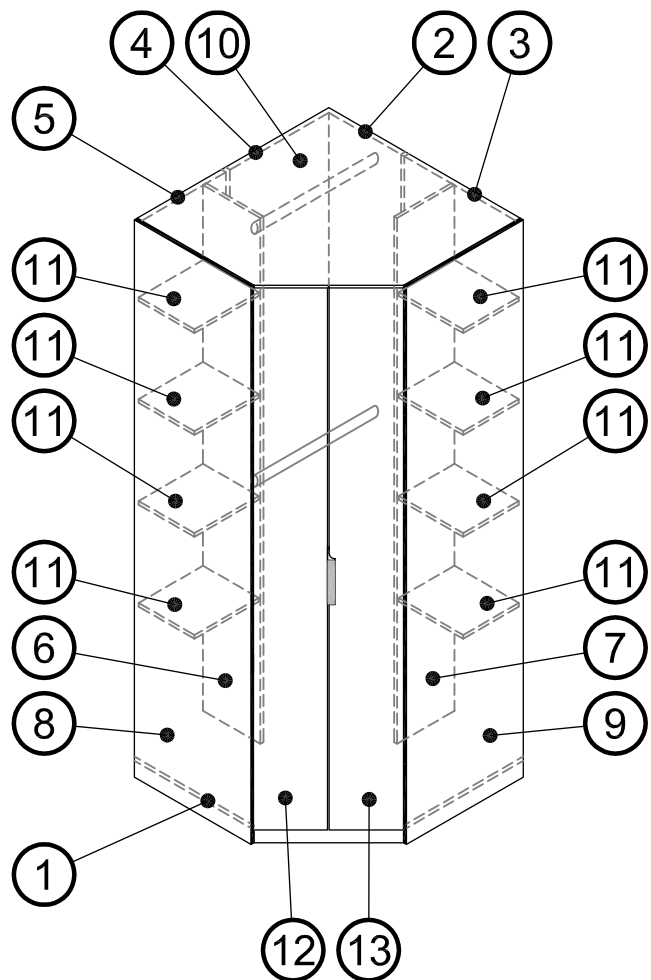
Art. Nr. 1041-Lö

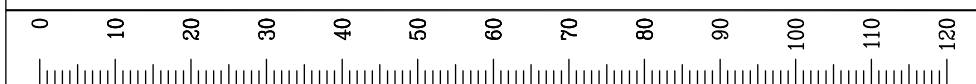
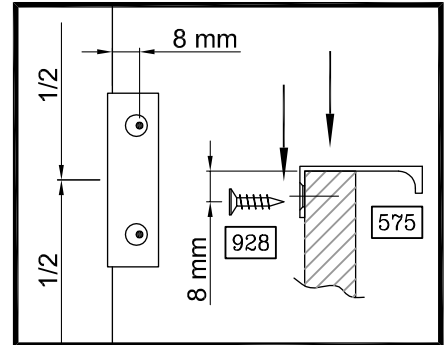
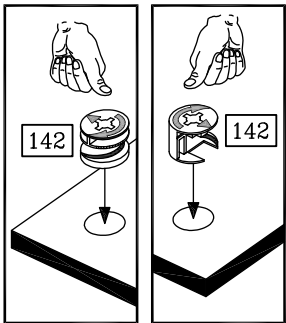
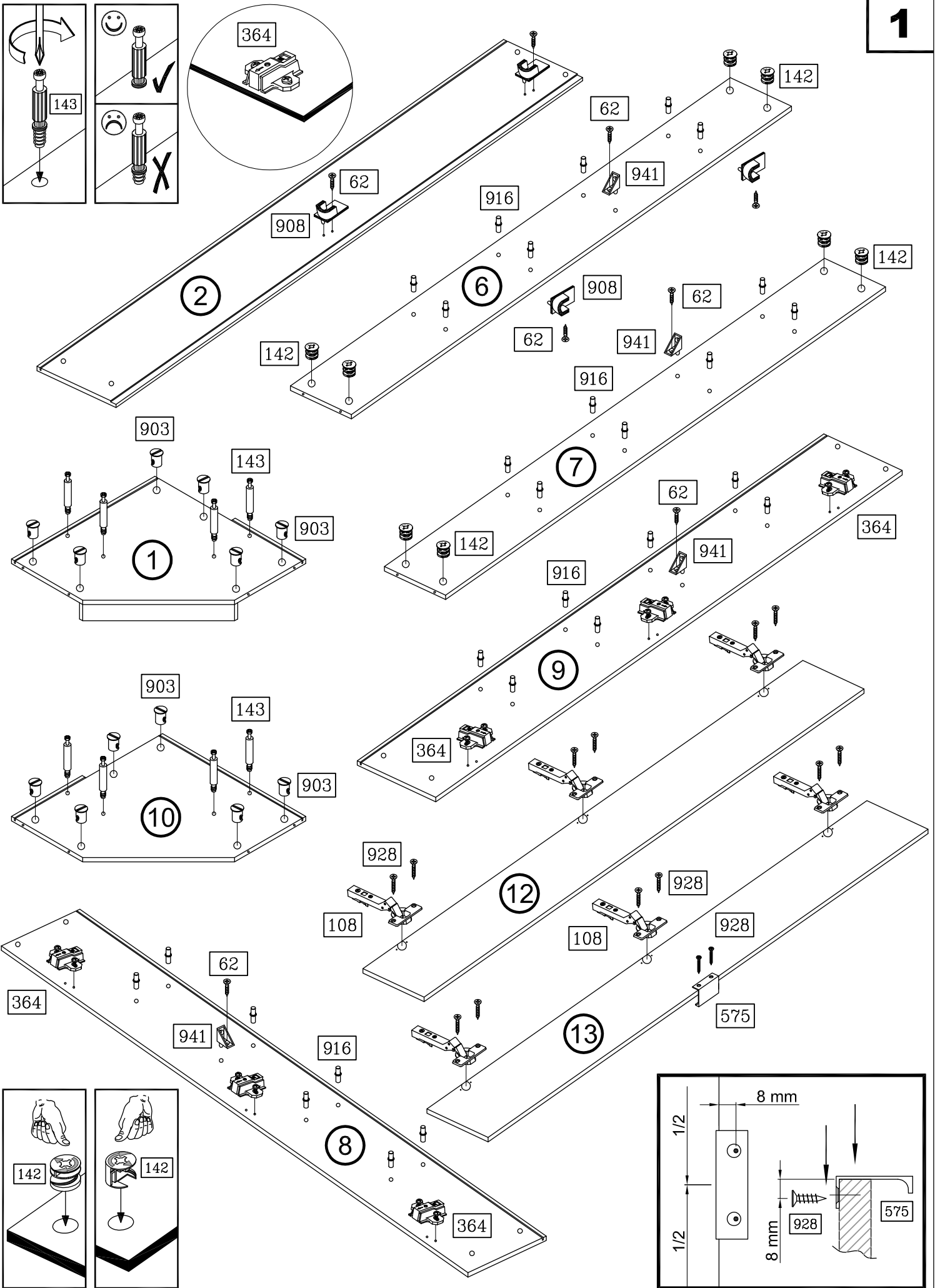
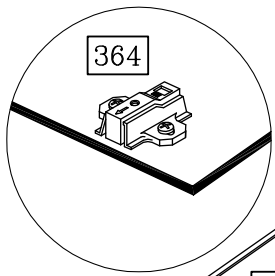
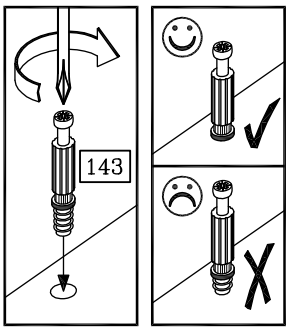


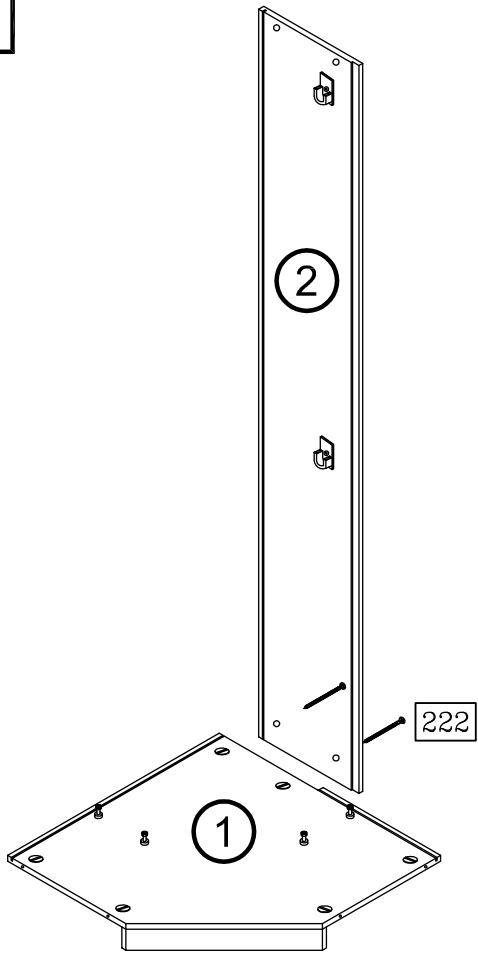
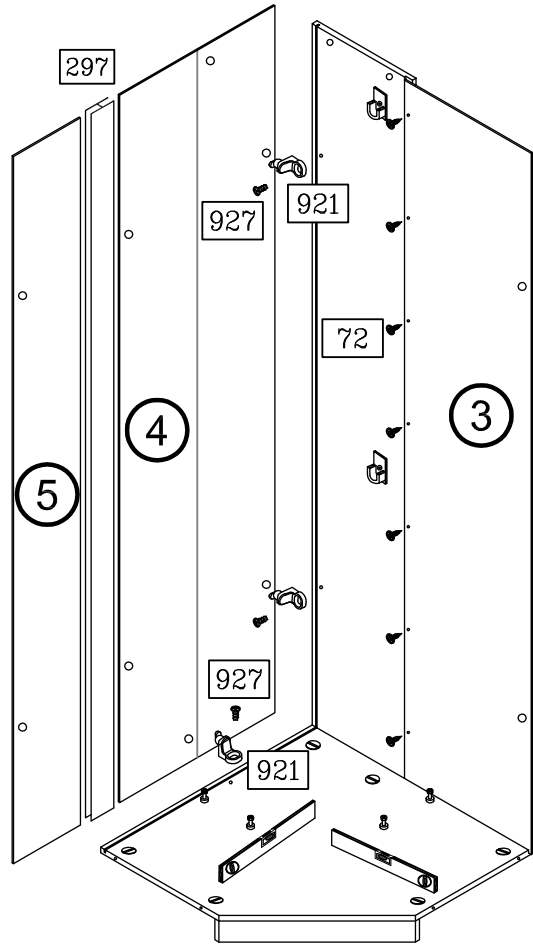
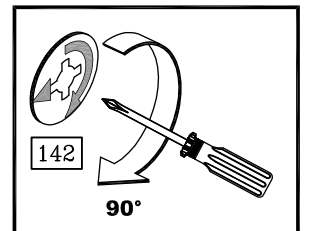
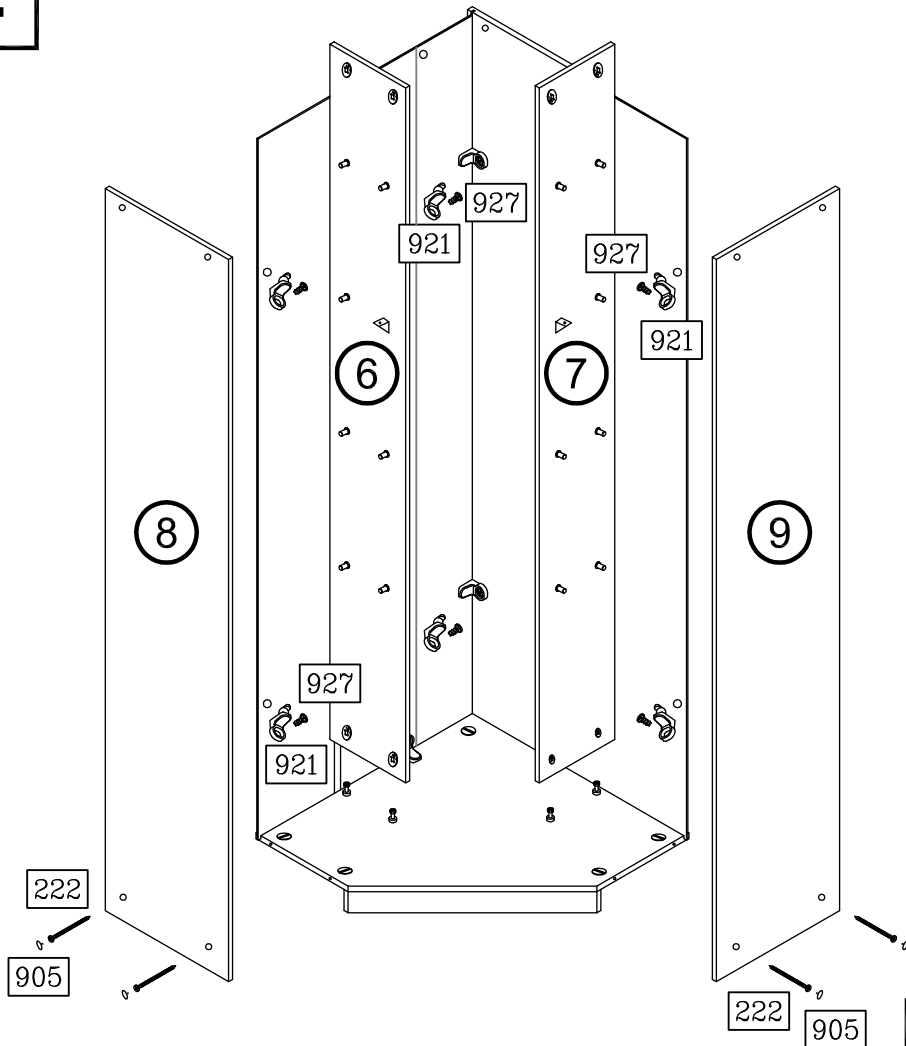
Art. Nr. 1041



| | | |
|-------------------|-------------------|-------------------|
| 62 12x | 72 7x | 108 6x |
| 3,5 x 13 | 4x13 | |
| 142 8x | 143 8x | 222 12x |
| Ø 15 x 11,5 | 6 x 44 | 4,5 x 55 |
| 295 2x | 297 1x | 364 6x |
| 563 mm | 1834 mm | |
| 928 2x | 575 1x | 903 12x |
| 4 x 15 | | Ø 12 / 2,5 |
| 908 4x | 916 28x | 921 10x |
| | | |
| 927 10x | 928 12x | 941 4x |
| 6,3 x 11 | 4 x 15 | |

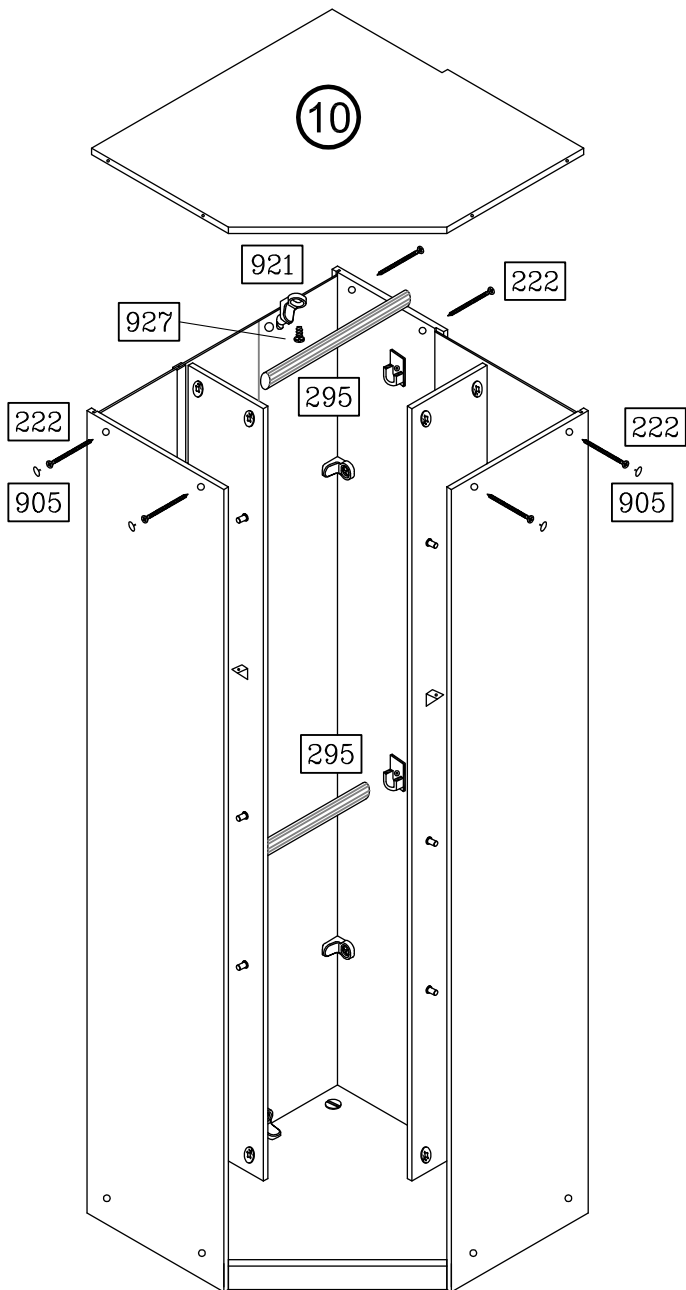
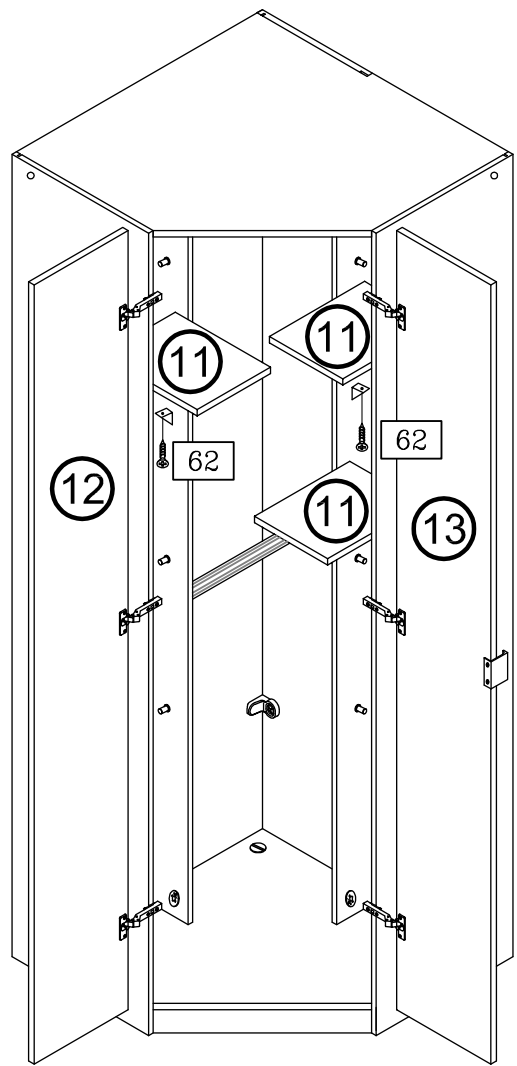
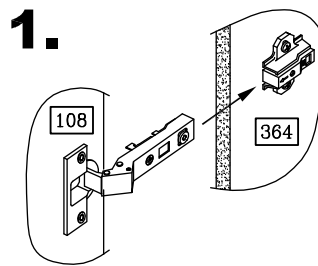
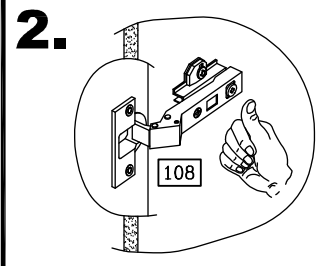




2**3****4**

1041-Lö-2

3/4

5**6****1.****2.****7**