



SUUNTO

SUUNTO 9

# Value proposition

AS TOUGH AS YOU

Suunto 9 is an ultra-endurance GPS watch with exceptional battery life. **Now available in two new outdoor inspired designs, with extreme durability and a feature set optimized for the toughest outdoor adventures.**



Suunto 9 Baro Granite Blue Titanium



Suunto 9 Baro Charcoal Black Titanium



# Key messaging pillars



## Tough

- **Tested against US military standards**
- Titanium bezel with **minimalistic geometry**
- Scratch resistant sapphire glass
- Waterproof 100m
- Abrasion resistant textile strap in two lengths.



## Outdoor

- **Up to 7 days of GPS tracking** (up to 170h in Tour mode, GPS fix every 60min)
- Weather insights, incl. storm alarms and sunset/sunrise info
- Know your location and way back with 'Safe'
- Altitude info & Air pressure

New features in blue



## Navigation

- Create and discover routes in Suunto app and navigate offline with the watch.
- **Turn-by-turn navigation powered by komoot. (not available in China)**
- **POI navigation:** Save locations in Suunto app or on the watch. Navigate towards those locations with your watch.

# Product design

New Suunto 9 Titanium is designed purposefully and function driven approach to fit for the most demanding outdoor sports and adventures.

We are introducing our new design language, featuring our Nordic design values. This watch is not bulky but integrated and tough.

We are continuously collaborating with our global community of field testers and professional athletes to make our products even stronger.

Reduced form factors and matte surface finishes fit perfectly into the outdoors and upcoming trends in the outdoor sport environment.

Inspiration for muted colorways and matte surface finish comes directly from the Finnish nature. **Granite Blue** with ochre moss like color on the bezel, and **Charcoal Black** with a light ash color bezel detail help create a natural and unified look and feel for the watches.

Granite Blue is our new hero colour that is new for the entire Suunto product family.



GRANITE BLUE



CHARCOAL BLACK



# Design details

- Suunto 9 Baro Titanium is extremely durable, yet **the lightest Suunto 9 watch** in the range.
- New minimalistic bezel design is made of high grade 5 titanium, that is extremely durable and helps to reduce watch size and weight to bare minimum.
- Both watches have sapphire crystal glass with high scratch and shatter resistance properties.
- All matte metal parts are coated with durable anti-fingerprint coating for improved stain and dirt resistance.
- Textile straps are made of nylon webbing that is water-repellent, durable, and can withstand long exposure to water and sun without deteriorating properties – same way as premium outdoor shell jackets.
- Watch comes with two different strap lengths in the box, medium and large.



# Military testing

Suunto 9 Baro and Suunto 9 Baro Titanium product families have passed the following MIL-STD-810 testing:

- Test Method 500.6 Low Pressure (Altitude)
- Test Method 501.7 High Temperature, operational
- Test Method 502.7 Low Temperature, operational
- Test Method 503.7 Temperature Shock
- Test Method 507.6 Humidity
- Test Method 510.7 Sand and dust
- Test Method 516.8 Shock
- Test Method 516.8 Drop
- Test Method 521.4 Icing/Freezing Rain

**MIL-STD-810**, *Environmental Engineering Considerations and Laboratory Tests*, is a [United States Military Standard](#) that emphasizes tailoring an equipment's environmental design and test limits to the conditions that it will experience throughout its service life, and establishing chamber test methods that replicate the effects of environments on the equipment rather than imitating the environments themselves.

## Textile strap in two lengths



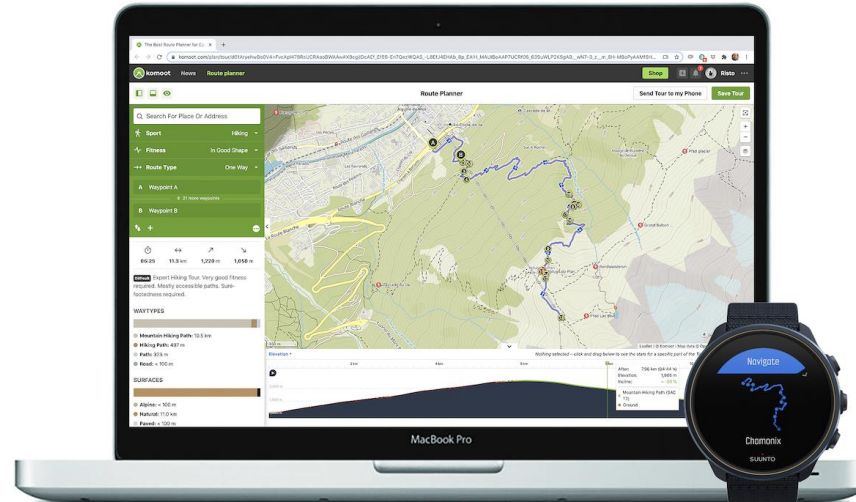


# Turn-by-turn navigation powered by komoot



## Connect with komoot in Suunto app.

All Suunto watch buyers will get 2 free map regions from komoot as part of Suunto Valuepack.



**Find or plan tours in komoot.** Routes automatically sync to Suunto App after which you can select and sync them to Suunto watch. All your outdoor activities recorded with a Suunto watch are automatically synced to both Suunto app and komoot.



**Turn alerts:** When navigating, the watch alerts you about an upcoming turn. This makes the navigation experience much more enjoyable, as you don't need to keep an eye on the screen to see which way to take. You can choose to keep e.g. the pace or altitude screen on. There is one alert 100m prior to a turn and one at the turn. (With Spartan family no direction is shown, there is only and alert that you need to turn)

*Komoot is available globally, but not in China. Komoot in China potentially in Q3/Q4'21. More details about the partnership in [Komoot – Suunto deck](#)..*



# POI Navigation



**Save POI's.** Save important locations beforehand in Suunto app or your current location on the go with the watch.



**Navigate to those POIs with your watch.** While navigating towards the POI you can see the name of the POI as well as the direction and distance to the location.