

QUICK USER MANUAL

LAUNDRY COMES OUT DAMP AFTER THE DRYING PROCESS



Hot laundries which come out after the drying process might be felt more damp than they really are.

- **The programme used might not be suitable for the type of laundry.**

Check the care labels on the laundry items, select a suitable programme for the type of laundry and additionally, use the time programmes.

- **The surface of the lint filter might be clogged.**

Wash the filter with lukewarm water.

- **The heat exchanger might be clogged.**

Wash the heat exchanger.

- **The dryer might be overloaded with laundry.**

Do not overload the dryer.

- **The laundry might be insufficiently spun.**

Select a higher spin speed on your washing machine.

- **There might be a layer of lime on the humidity sensor.**

Clean the humidity sensor.

SUITABLE FOR DRYING IN A DRYER



Suitable for
drying in a
dryer



At high
temperatures



At medium
temperatures



At low
temperatures

NOT SUITABLE FOR DRYING IN A DRYER

Not suitable
for drying in
a dryer



Hang wet
to dry



Hang to dry



Spread to dry



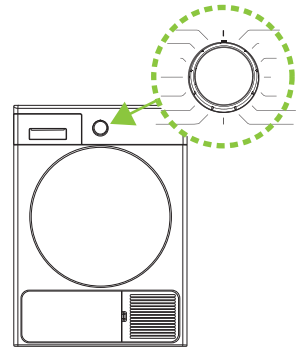
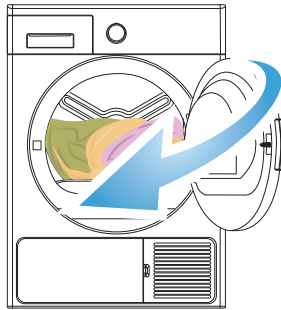
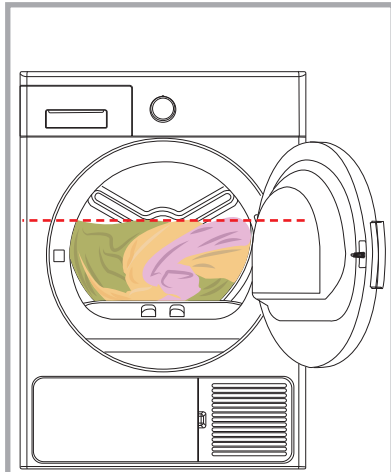
Follow the instructions on the labels of the laundry to be dried. Only dry items that have a statement/symbol that indicates "they can be dried in a dryer".

PROGRAMME SELECTION TABLE *

Programme	Laundries
Cotton Extra Cupboard Dry <input type="checkbox"/> Iron Dry	Cotton towels, bedsheets, pillowcases, bathrobes, etc.
Synthetics Cupboard Dry Iron Dry	Synthetics such as shirts, t-shirts, blouses, etc.
Time Programmes	To reach the required drying level at a low temperature, you can use the time programmes of 20 min. to 200 min. Regardless of the drying level, the programme stops at the desired time.
Special Programmes Delicate Anticrease Baby Care Jeans Duvet	Delicate : Shirts, blouses and silk garments. Anticrease : For Cotton and synthetic laundries. Baby Care : Delicate drying for infant clothes. Jeans : Jean clothes. Duvet : This programme is used to dry duvet.
Rapid Programmes** Express 45' Shirts 30'	Express 45' : 1 kg of synthetics shirts spun at a high speed in the washing machine are dried in 45 minutes. Shirts 30' : 2 to 3 shirts are ready for to be ironed in 30 minutes.

(*) Please check the Programme Selection and Consumption Table (5.2) in the instruction book (**) The duration for rapid programs are only valid for clothes which are spun at 1200 rpm.

QUICK USER MANUAL

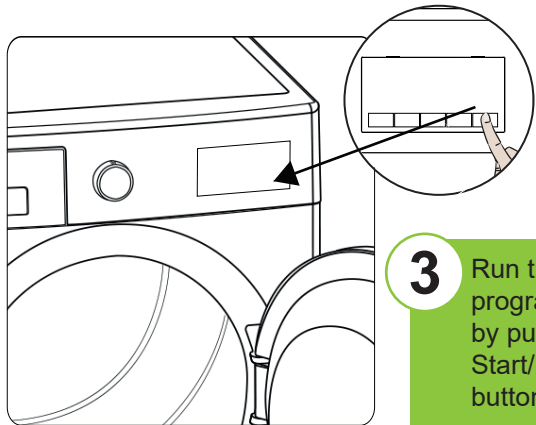


1 Separate your clothes according to their types, place into the machine and close the door.

2 Select the suitable programme for your laundry by rotating the adjustment knob.

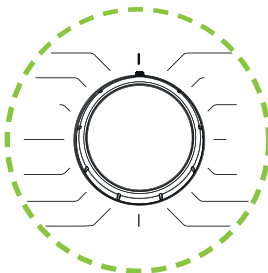


It is not recommended to load the dryer with more laundry than the amount shown in the figure. When overloaded, the drying performance of the dryer will decrease and the dryer and laundry might be damaged.



3 Run the programme by pushing Start/pause button.

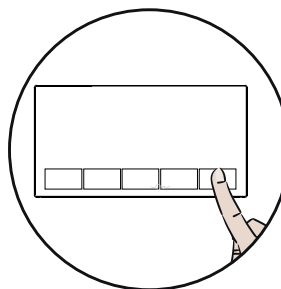
Programme Selection Knob *



Use the programme selection knob to select the desired drying programme.

Note: Please read instruction book for detailed informations.

Electronic Additional Functions *



- You can select additional functions for drying.
- You can run the programme by pushing Start/pause button.

* Functions and programmes can change according to the model of your product.

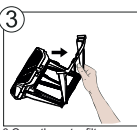
QUICK USER MANUAL

CLEANING AND CARE

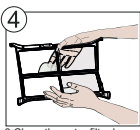
To clean the lint filter:



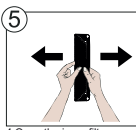
1. Open the loading door.



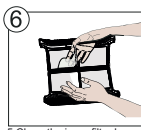
2. Pull up the lint filter to remove it.



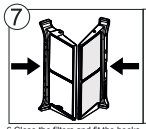
3. Clean the outer filter by your hands or using a soft cloth.



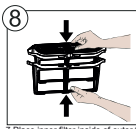
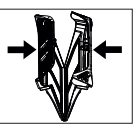
4. Open the inner filter.



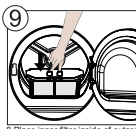
5. Clean the inner filter by your hands or using a soft cloth.



6. Close the filters and fit the hooks.



7. Place inner filter inside of outer filter.

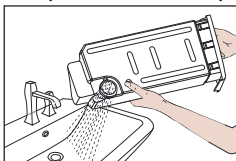
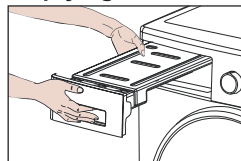


8. Place inner filter inside of outer filter.



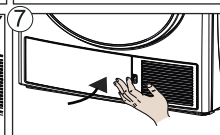
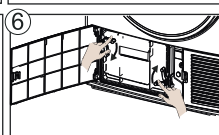
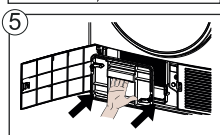
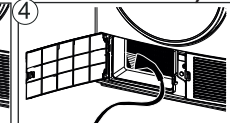
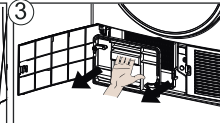
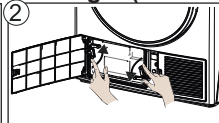
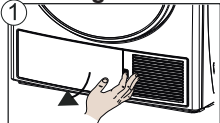
After the dryer has been used for a certain period of time, if you encounter a layer that will cause obstruction on the filter with warm water to clean the layer. Dry the filter thoroughly before reinstalling it again.

Emptying the Water Tank (After each use)



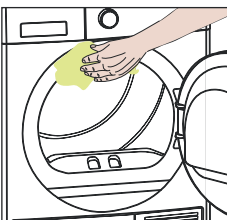
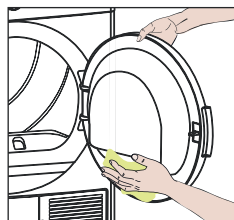
1. Pull the drawer cover and carefully take out the tank.
2. Empty the water in the tank.
3. If there is lint accumulated on the discharge cap in the tank, clean it with water.
4. Refit the water tank.

Cleaning The Heat Exchanger (AFTER EVERY 10 USE OR ONCE A MONTH)



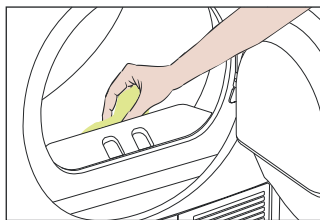
1. Open the kick plate cover as shown.
2. Unlock the exchanger cover by turning in the direction shown with arrows.
3. Take out the exchanger cover as shown.
4. Clean the front surface of the exchanger as shown.
5. Fit the exchanger cover as shown.
6. Lock the exchanger cover by turning in the direction shown with arrows.
7. Close the kick plate cover as shown.

Cleaning the Inner Surface of the Loading Door (After each use)



Open the loading door of the dryer and clean all of the inner surfaces and the gasket with a soft, damp cloth.

Cleaning the Humidity Sensor (4 times a year)



1. Open the loading door of the machine.
2. If the machine is still hot due to the drying process, wait for it to cool down.
3. Using a soft cloth soaked in vinegar, wipe the metal surfaces of the sensor and dry them.

QUICK USER MANUAL

INFORMATIONS, WARNINGS AND ECONOMIC USE

Your dryer is fitted with systems that continuously perform checks during the drying process to take the necessary measures and warn you in case of any malfunction.

- Do not block the ventilation grills found on the plinth of the tumble dryer.
- When the laundry is being washed, the spin speed should be at the highest level possible. This will shorten the drying time and reduce energy consumption.
- Cleaning the lint filter periodically after each use; provides your product to work energy efficiently and dry in a suitable times.
- Your product can reach high level of outer surface temperatures during the cycle.
- Please select the most suitable programme for preventing the over drying and creasing possibility of your laundries.
- If you do not take out the laundry after the programme has ended, the 1-hour Anti Crease phase will automatically be activated. This programme rotates the drum at regular intervals to prevent creases.
- Please use the time drying programmes for the one piece of laundry or for a couple of clothes. Because humidity sensor may can not detect the real humidity level for less laundry.
- Do not load your machine with over-wet clothes.
- To use the dryer on the washing machine, a fixing part must be used between the two products. The fixing part must be attached by an Authorised Service Provider.
- Please make sure that your water tank is empty before each drying use.
- You can hear a continuous fan sound during the drying process.
- Condensed water is pumped into the water tank periodically during the drying process. You can hear a splash voice during this while.
- You may hear a clatter sound caused by zippers, clasps and buttons of your clothes.
- In order to not to have a damp laundries problem, please dry your big (like duvets, etc.) and small sizes of laundries separately.
- During the drying process, you may hear some mechanical noises resulting from the compressor and pump running at the same time. This noise does not affect the performance of the product.
- The coolant in the heat pump system is eco-friendly and flammable. For this reason, the product must be used in an area where there is ventilation and no open flame sources to avoid the risk of leaks.
- If the clothes are not dried even if the programme duration is very long, contact the Authorised Service Provider.
- Do not forget to read the user manual for detailed descriptions and warnings.