

# ALEXANDRA SET

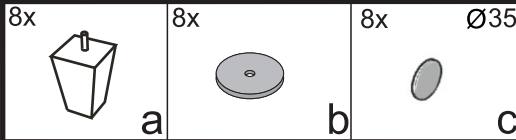
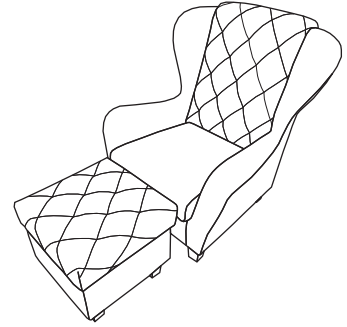


- (DE) Montageanleitung
- (PL) Instrukcja montażu
- (NL) Handleiding voor de montage
- (GB) Assembly instructions
- (TR) Montaj talimatı
- (RU) Инструкция по монтажу
- (IT) Istruzioni di montaggio
- (FR) Notice de montage
- (RO) Instrucțiuni de asamblare
- (SK) Montážny návod
- (CZ) Montážní návod
- (HU) Szerelési útmutató

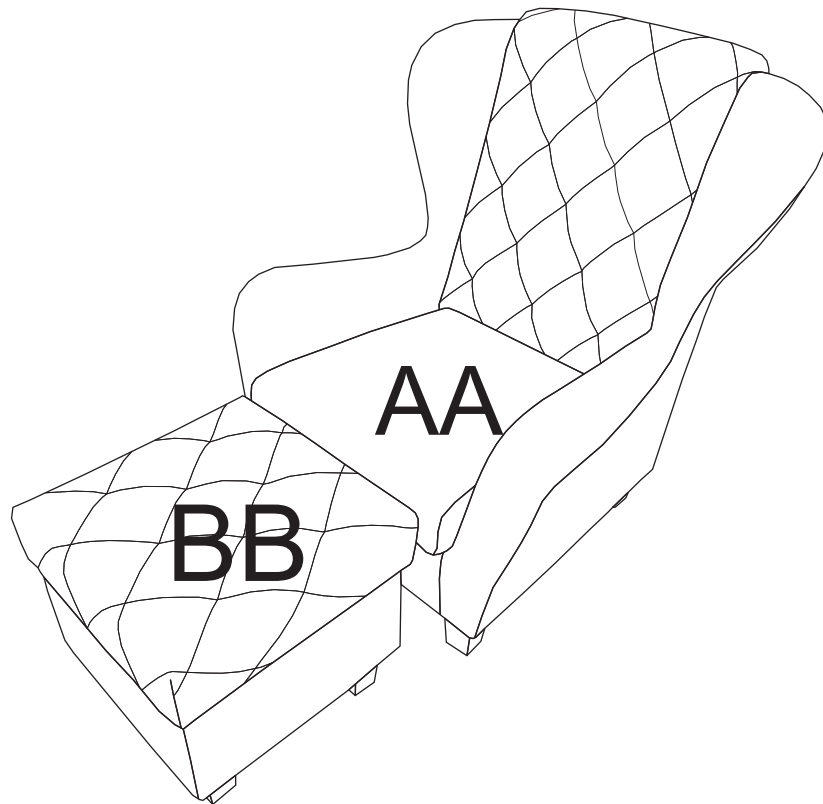


Name - Nazwa - Naam - Name - Isim - название  
Nome - Nom - Numele - Meno - Jméno - Neve

## ALEXANDRA SET

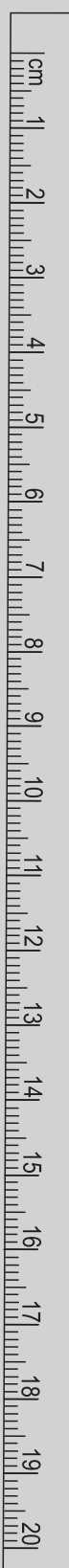


Service - Servis - Dienstverlening - Servis - Serwis - Сервисная служба - Servizio - Service  
Serviciu - Služby - Szolgáltatás

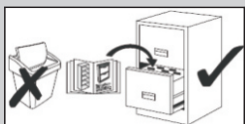
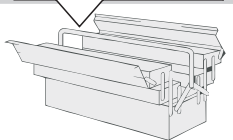


Ver: 19.03.2024

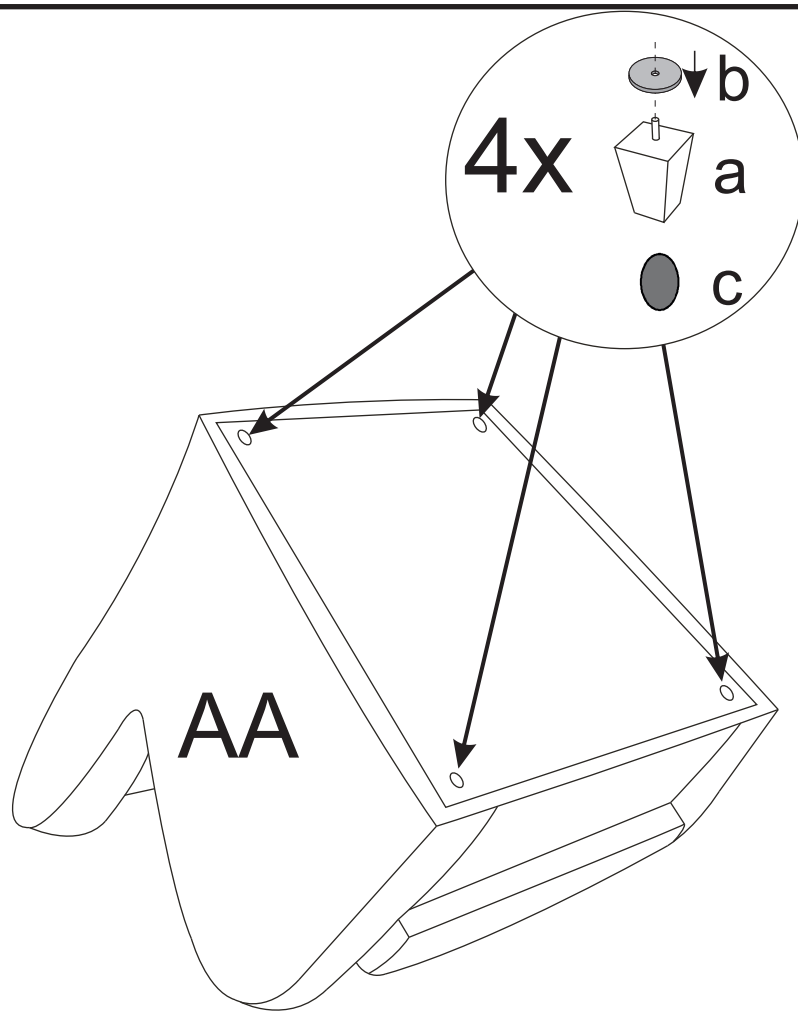
ALEXANDRA SET



13 +



1



2

